



PIGEON MOUNTAIN

PMI®

INDUSTRIES

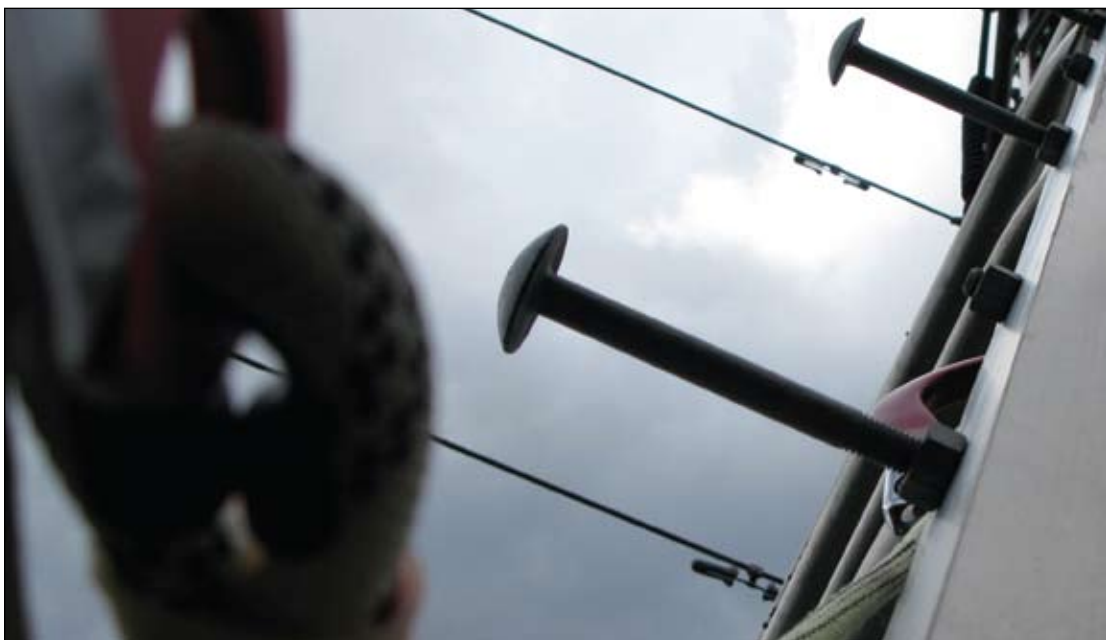
www.pmirope.com



WHY IS ANSI IMPORTANT TO YOU?

Falls in the workplace are a major cause of death and injury, and have been on the rise in recent years, though a vast number go unreported. Most of these instances were preventable. As a result, many different government agencies and other organizations have worked together to develop new, higher standards for greater safety in the workplace.

While ANSI standards are considered “voluntary”, OSHA can adopt any of these standards and turn them into a federal requirement. In the early 70’s, OSHA simply used what was available at the time as a basis for their new regulations. ANSI standards were considered the best at the time, and thus became a driving force behind how OSHA Regulation was developed, and how regulatory issues are handled today. The official stance of ANSI is as follows: “ANSI will furnish assistance and support and continue to encourage the development of national consensus standards for occupational safety and health issues for the use of OSHA and others.”

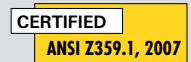


At PMI we look for the most innovative products for work or rescue applications. There are many reasons to find gear that properly works for your operation, and on the following pages we offer products that take the guesswork out of a situation and streamline your professional life.



Staying compliant can be a full time job. PMI is here to help! With a full line of ANSI Z359.1, 2007 products, you will be sure to have everything you need to not only meet regulatory requirements, but also to keep you and your team safe.

Throughout this catalog, look for this mark. It indicates that the product is certified and marked as meeting industry standards as noted.



CHOOSING A SOLUTION FOR RESCUE RESCUE AND EVACUATION SYSTEMS

All safety systems for work at height should include a plan for rescue. With most vertical endeavors, being on-rope is secondary to the actual job being performed. Workers must always ensure that equipment, systems, and methods comply with applicable regulations, and that the method used will safely and effectively perform the job at hand. The following four heightec-PMI™ Systems offer a complete, ready-to-go kit for rescue in any industry or work situation.

To be effective, rescue systems must be easy to use, safe and reliable. The following criteria should be applied when evaluating a rescue system:

- 1) Rescuers should not be part of the anchor system.
- 2) In case of operator panic, the lowering or raising device must be "fail-safe".
- 3) Systems should be simple to deploy and operate.
- 4) Subject attachment should be secure.
- 5) Additional parts are not necessary for rope devices when changing from one mode of operation to another.

heightec-PMI™ TOWERPACK™ SELF EVACUATION OR RESCUE OF ANOTHER BY RAPPELLING

TowerPack™ is designed to meet the requirements of mast and tower climbers who need to evacuate themselves or recover an injured worker.

Allowing for immediate descent of a rope, the kit includes the PowerLock™ descender. The PowerLock™ descender has a double action safety mechanism which will brake if the user either lets go or squeezes too hard in panic. Prior to descent, the PowerLock™ easily adjusts the amount of rope slack and provides excellent braking control, even with a load of two persons. This system does not include a rescuer harness.

System Features:

- 11 mm PMI Access Pro Rope (50, 66, or 100 m)
- 1 - 120 cm protected anchor sling
- 4 - Steel ANSI rated Carabiners
- 1 - Powerlock rescue descender
- 1 - Pair EMT Shears
- 1 - Casualty attachment sling
- 1 - Carrying Bag

50 m	KT36108	\$570.00
66 m	KT36120	\$627.28
100 m	KT36121	\$749.00

CERTIFIED
ANSI Z359.1, 2007



DESIGNED, BUILT AND TESTED FOR RESCUE

- Self Rescue
- Companion Rescue by Lower
- Companion Rescue by Raise
- Companion Rescue by Controlled Descent



heightec-PMI™ SCAFFPACK™

RESCUE OF A SUSPENDED PERSON BY LOWERING OR RAISING

ScaffPack™ is a compact, self contained rescue system which allows a subject to be recovered by a single rescuer. Once the casualty has been connected, they can be raised or lowered by one person to a safe place. This system is specifically designed to lower or raise a subject from a lanyard or fall arrest block. The wide casualty attachment hook can be fastened to various points on the casualty for simplicity and ease of operation.

The whole system is fail safe in operation, and will lock if operated in panic. Using the Quadra lowering device, allows rope to be given out when not under load, but will lock if subjected to a sudden impact or fall. When the Quadra handle is released, the device will lock, allowing the rescuer to attend to other issues.

System Features:

- 11 mm Access Pro Rope w/eye for Scaffold Hook (25, 50, 66, or 100 m)
 - 1 - Casualty Attachment hook (emergency use only, not ANSI rated)
 - 2 - ANSI rated steel carabiners
 - 1 - ANSI rated steel captive eye carabiner
 - 1 - Quadra rescue device
 - 1 - Haul cam pulley
 - 1 - Vector
 - 1 - RescueMate pole
 - 1 - Pair EMT Shears
 - 1 - Steel Anchor Sling, 1 Meter
 - 1 - Steel Anchor Sling, 2 Meter
 - 1 - Casualty Attachment lanyard
 - 1 - Accessory carabiner
 - 1 - Carrying bag
- | | | |
|-------|---------|------------|
| 25 m | KT36106 | \$1,100.00 |
| 50 m | KT36113 | \$1,189.50 |
| 66 m | KT36114 | \$1,246.78 |
| 100 m | KT36115 | \$1,368.50 |

CERTIFIED

ANSI Z359.1, 2007



SECURING THE SUBJECT TO THE LINE.....

heightec-PMI™ locking extendable poles are essential for attaching a rescue line to a subject. The heavy duty fiberglass poles are rigid when extended and detach easily from the line once your patient is secured. Poles are included in ScaffPack™ and RescuePack™. Normal extended length 3.2 m (10.5 ft).



CERTIFIED

ANSI Z359.1, 2007

heightec-PMI™ TENSOR SINGLE LANYARDS

The heightec-PMI™ Tensor Single Lanyard, features the new Suspension Trauma Shock Absorber. This innovative shock absorber features an integral, automatically deployed foot loop.

Key Features:

Sewn terminations . 25 kN scaffold hook end . Features new Suspension Trauma Lanyard

Length: 1.75 m
SG51233 \$149.00



A footloop is automatically deployed when the shock absorber expands.



CERTIFIED

ANSI Z359.1, 2007

heightec-PMI™ TENSOR TWIN LANYARDS

Energy absorbing fall arrest lanyard of the very highest specification. heightec-PMI™ lanyards are premium products offering advanced safety features. This lanyard has impressive technical specifications: the back-up webbing and stitching exceed the tensile strength requirements of European standard EN 355 by 50% and it has been dynamically tested with a load of 125 kg without damage.

Key Features:

Sewn terminations . 25 kN scaffold hook . Comes with screw link for secure harness attachment

1.25 m
Weight: 3.32 lbs (1.51 kg)
SG51234 \$218.00

1.50 m
Weight: 3.44 lbs (1.56 kg)
SG51235 \$236.00



heightec-PMI™ PIRANHA ADJUSTABLE LANYARD

The Piranha adjustable lanyard is a compact device used for work positioning on masts, towers, pylons or other lattice structures in the telecoms, power and entertainment industries. Sewn terminations offer greater security, while a safety hook at one end makes clipping in easy. An additional safety back-up should always be employed when using positioning equipment.

Length: 2 m
Weight: 1.44 lbs (655 g)
HD26179 \$181.00



heightec-PMI™ ENERGY ABSORBERS

When working at height, you need a solid system you can rely on in case of a fall. This choice in gear is not used for support, but rather a backup for work at height. Each Energy Absorber features the only integral, automatically deploying foot loop available on the market.

Key Features:

Absorbers dynamically tested with 125 kg . Comes with snap hook for secure harness attachment . Individually numbered for traceability . Safety Step foot loop

No Hook
Weight: 8.8 oz (250 g)
SG51207 \$49.00

Snap hook, One End
Weight: .93 lbs (425 g)
SG51208 \$60.00

Snap hook, Both Ends
Weight: 1.32 (600 g)
SG51209 \$79.00



CERTIFIED

ANSI Z359.1, 2007

CONNECT

Compliance is important: we offer a variety of lanyards and connectors that are certified to the current ANSI Z359.1, 2007 standard.



SMC FP ANSI LITE

The SMC FP Lite has been specifically designed for all your fall protection needs. Built from the ground up giving you the best of the best in carabiner functionality, the FP features an easy opening auto locking gate. You don't have to sacrifice strength for weight when working at height all day long. A captive eye pin (to be assembled) is included.

Length: 4.52" (145 mm)
Gate Opening: 1" (25.4 mm)
Weight: 8.9 oz (254 g)
MBS: 31 kN (7,000 lbf)
SM10210 \$28.00



CERTIFIED
ANSI Z359.1, 2007

SMC SAFETY LOCK

Available in several different metal finishes, the black zinc coated models are ideal for tactical operations. A large gate opening fits easily over litter rails, and the Safety Lock model has a 3-step auto-locking gate sleeve.

Length: 5.04" (128 mm)
Gate Opening: 1.20" (30.5 mm)
Weight: 10.6 oz (301 g)
MBS: 46 kN (10,341 lbf)
SM21501 \$47.10



CERTIFIED
ANSI Z359.1, 2007

DMM BIG BOA

The offset shape of the Boa provides extra strength without compromising function. It provides extra capacity and safety when it comes to rigging. The Boa uses a 7075 barrel making it is easy to open with one hand.

Weight: 3.5 oz
MBS: 6,300 lbs
HD26212 \$36.75



CERTIFIED
CSA
ANSI Z359.1, 2007
EN 362:2004

PENSAFE PINCER

The PenSafe Pincer™ is a revolutionary alternative to snap hooks. A patented interlocking closure can withstand gate side and gate face loads of 3,600 lbs and remain functional even when twisted or improperly loaded. ANSI Certified, the Pincer has numerous applications including construction, protective services, utilities and industry. Easy one-handed operation.

Length: 5.92" (mm)
Gate Opening: 0.77" (mm)
Weight: 10.7 oz (302 g)
HD26204 \$12.00



CERTIFIED
CSA
ANSI Z359.1, 2007
EN 362:2004

TECH TALK

Although OSHA regulations have not yet been updated to reflect this change, the 2007 ANSI Z359.1 standard now requires the gate to withstand 3600 pounds force in all directions. Longitudinal strength requirement remains 5000 pounds.

BEARINGS

Which is better - a pulley with bushings or a pulley with sealed bearings? A pulley whose sheave turns on sealed ball bearings is usually more efficient than a pulley incorporating bushings. Output of a system using ball bearing pulleys is significantly higher than systems using all bushing pulleys and the same input forces.

Sealed bearing pulleys tend to be slightly more expensive, and are sealed closed to prevent contamination. While efficient, under extraordinary loads sealed bearings can be prone to damage. Pulleys with bushings tend to be less expensive and more durable than sealed bearing pulleys under heavy loads. In short; pulleys with bearings are higher maintenance. The best pulley for you depends on your specific application.



CERTIFIED

NFPA 1983 (06), G

SMC 3" PRUSIK MINDING PULLEY

The unique shape of SMC's aluminum side plates allow the efficient use of Prusik hitches as a belay or progress capture device. Constructed with a 3" diameter sheave running on a high efficiency ball bearing. Low profile fasteners help eliminate the possibility of the pulley snagging.

Key Features:

Ball bearing . Large top hole easily accepts 3 large carabiners . Designed for 11mm to 13 mm ropes . Precision machined aluminum side plates and sheaves . Sealed bearings . Double pulleys include a becket

	Tread	Sheave	Weight	MBS
Single	2.5"	3"	12.5 oz (354 g)	38 kN (8,542 lbf)
SM158000N			\$78.70	
Double	2.5"	3"	20 oz (590 g)	60 kN (13,488 lbf)
SM158500N			\$117.00	



CERTIFIED

NFPA 1983 (06), G

SMC 2" PRUSIK MINDING PULLEY

This mid sized PMP is the perfect choice for rigging with 11 mm (7/16") rope or when you don't have room for a 3" PMP. Pulley will accommodate up to 13 mm rope.

Key Features:

Precision machined aluminum side plates and sheaves . Sealed Bearings . Double pulleys include a becket . Also available in all Black

	Tread	Weight	MBS
Single	1.5"	6.3 oz (179 g)	38 kN (8542 lbf)
SM152700N		\$57.00	
Double	1.5"	10.4 oz (295 g)	54 kN (12,140 lbf)
SM152800N		\$89.20	



CERTIFIED

NFPA 1983 (06), L

SMC MICRO PRUSIK MINDING PULLEY

Just the thing for smaller ropes and lighter loads, SMC's Micro PMP's are ideal for building a mini haul rig or anywhere that a compact lightweight system is needed. Double version is designed with a becket to accommodate compound and complex pulley systems. Max rope diameter 12.5 mm

Key Features:

Ball bearing . Precision machined aluminum side plates and sheaves . Sealed Bearings . Double pulleys include a becket . Also available in all Black

	Tread	Weight	MBS
Single	1"	3.5 oz (99 g)	22 kN (4,946 lbf)
SM153000N		\$37.90	
Double	1"	5.8 oz (164 g)	47 kN (10,566 lbf)
SM154000N		\$75.00	



SMC NFPA RIGGING PLATE

Half the size of the bigger plates on the market, yet just as strong and with oversized holes to accommodate more gear. Contoured edges are easy on ropes, webbing and carabiners. Each oval hole will easily accept 2 large carabiners while a large center hole accepts numerous connections.

Key Features:

Anodized aluminum . Holes are numbered for quick identification

Weight: 11.4 oz (323 g)

MBS: 52 kN (11,690 lbf)

Red

SM130005 \$49.30

CERTIFIED

ANSI Z359.1, 2007
NFPA 1983 (06), G



PMI CHOKER SLING

Wrapped around a beam, the PMI Choker sling provides a quick and safe anchor. An extra piece of webbing is sewn on the entire length of the sling to protect it from sharp edges and prolong its life.

Key Features:

Fast connection . Extra layer of webbing for protection . Supporting loads up to 22 kN (5000 lbf) . Always select an anchor that is capable of supporting 22 kN (5000 lbf) per person attached

3 ft (100 cm)

Weight: 1.2 lbs (544 g)

SG51213 \$34.50

4 ft (150 cm)

Weight:

SG51242 \$36.50

6 ft (200 cm)

Weight: 1.8 lbs (816 g)

SG51214 \$40.50

8 ft (250 cm)

Weight:

SG51243 \$44.50

CERTIFIED

ANSI Z359.1, 2007
OSHA



heightec-PMI™ STEEL ANCHOR SLINGS

These steel anchor slings from heightec-PMI™ are strong and versatile. Available in two lengths and covered with a durable PVC cover.

Key Features:

2 lengths . PVC cover

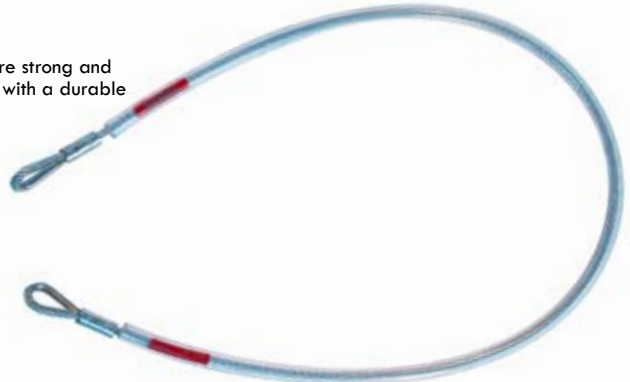
MBS: 30 kN (6500 lbf)

1 m

HD26165 \$29.75

2 m

HD26166 \$42.75



CERTIFIED

NFPA 1983 (06), L

SMC SPIDER

The SMC Spider is an auto locking NFPA L Rated Descender designed for work positioning and personal descent. The Spider provides persons working at height the ability to easily maneuver and secure themselves while on the fly. Allowing users to easily load and unload from the device without having to unclip from their harness, it is an ideal descender for window washers, fire fighters and industrial workers who need a device that provides them with optimal strength and performance. Designed to accommodate 11 mm to 12.5 mm ropes.

Weight: 19.8 oz (562 g)
MBS: 13.5 kN (3,174 lbf)
SM220300N \$150.00



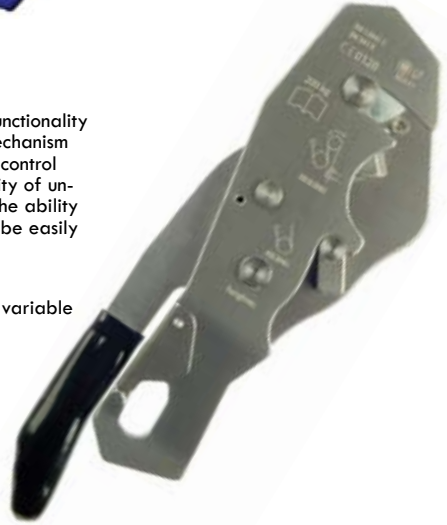
heightec-PMI™ PRISM

The Prism descender is a completely new product which offers new functionality to rope access workers. It contains two new patented principles; a mechanism which multiplies the braking force applied by the user providing fine control and a new design of a secondary brake which minimizes the possibility of uncontrolled descent. An additional important feature of this device is the ability to un-thread the secondary braking system, which allows the rope to be easily pulled back through the device during short ascents.

Key Features:

Versatile . Secondary panic lock . Smooth descent . Extra bollard for variable friction while loaded . Can be loaded while attached to harness

Weight: 1.10 lbs (500 g)
MBS: 36 kN (8,036 lbf)
COMING SOON



heightec-PMI™ MANTA

The new Manta is a rope access backup device and fall arrest rope grab. Can be attached direct to the harness or by a dynamic rope cowstail without the need for separate energy absorber. The Manta can be placed on and off the rope at any point and the soft cam action helps to protect your rope.

Key Features:

Can be used as a positioning device . Alloy body . Stainless steel cams . Short arrest distance for user . Attaches directly to harness

Weight: 12.35 oz (350 g)
COMING SOON

heightec-PMI™ VECTOR

The Vector Fall Arrest device is the ideal self trailing rope grab for work at height. Designed to move up and down the rope easily for greater access while working.

Key Features:

Can be used as a positioning device . Alloy body . Stainless steel cams . Self Trailing

Weight: 12.35 oz (350 g)
COMING SOON



ESCAPE

When something goes wrong when working at height, self-rescue is the best first line of defense. Anyone who works frequently at height should be equipped with, and trained to safely deploy, an emergency escape system. The best choice for an emergency escape system is one that can be carried on the person without interfering with work equipment (so it will be available whenever it is needed!), offers the user the features he needs for the environment he is working in, and is easy to deploy and operate.

heightec-PMI™ MICRON ESCAPE KIT

The Micron is a new personal micro-descender for Personal Escape. This tiny descender employs a unique, patented braking system to allow a finely controlled descent, and features an auto-locking "panic mode" if the handle is either squeezed too hard or released. The Micron is one of the most versatile escape tools on the market today.

Compact size with "full size" functionality will appeal to many industries but in particular fire service, wind turbine, offshore, and tower. It's compact size makes it easy to carry on any harness.

Key Features:

Integrated Technora rescue line . Compact & Lightweight . Can be carried easily carried in a small pouch

15 m

Weight: 2.6 lbs (1179 g)

HD26214 \$315.00

30 m

Weight: 3.65 lbs (1655 g)

HD26217 \$479.00



ERGONOMICS

A truly revolutionary design in harnesses, the Eclipse Ring takes comfort to a new level. The leg and waist webbing are sewn into the Eclipse Ring giving each section of the Matrix harness the ability to move separately. Walking, sitting, and working in a harness has never been more comfortable.

Comfort starts with smart design. The new thermafoam padding in the heightec-PMI™ harnesses makes them so comfy, you won't mind wearing them all day. Making lightweight, comfortable harnesses doesn't mean compromising on quality.



heightec-PMI™ MATRIX

For innovation in harness technology, the Matrix tops the list. The interchangeable front connection system allows the user to adapt the harness to any work situation by swapping out the chest connection. Harness comes with the Standard connection with Sternal D Ring.

There are four options:

- 1) Standard Connection with Sternal D Ring
- 2) Rope Access with Delta Screw Link
- 3) Fall Arrest with Sacrificial D Ring

Key Features:

Interchangeable chest harness . Comes standard with sternal D ring connection

Harness w/ Standard Connection

Weight: 4.2 lbs (1.9 kg)
SG51197 \$275.00

INTERCHANGEABLE FRONT CONNECTIONS

Rope Access w/Delta Screw Link

SG51246 \$58.00

Fall Arrest w/Sacrificial D Ring

SG51247 \$58.00



CERTIFIED

ANSI Z359.1, 2007



heightec-PMI™ ZERO G

The heightec-PMI™ Zero G is a sophisticated multi-purpose harness with excellent lumbar support. Particularly suitable for mast and tower climbing in rope access, telecoms, stage rigging and rescue. The Zero G is suitable for every type of work at height - positioning, suspension and fall arrest.

Key Features:

Front and rear fall arrest attachment . Comes with side D-rings . Self-adjusting leg risers . Eclipse Ring . Can also be used with interchangeable front connections available with the Matrix

Harness w/ Standard Connection

Weight: 4.2 lbs (1.9 kg)
SG51198 \$310.00



CERTIFIED

ANSI Z359.1, 2007

CS TECH HARNESS

PMI's one-piece, full-body harness was designed with the needs of the Confined Space worker in mind. Separating buckles on the leg loops and shoulder strap make this harness easy to put on and take off.

Key Features:

Dorsal, sternal, shoulder attachment points . Adjustable dorsal and shoulder rings . Adjusts to fit 25" - 55" waists . break-apart buckles on legs and right shoulder . Ergonomic shoulder straps . Quick adjusting low profile buckles on waist

Weight: 4.9 lbs (2.2 kg)
SG51156 \$245.00

CERTIFIED

NFPA 1983
CLASS III
ANSI Z359.1, 2006



CERTIFIED

ANSI Z359.1, 2007

heightec-PMI™ NEXUS HARNESS

Fall arrest harness suitable for a wide range of work at height situations. Sternal ring and dorsal ring provide two attachment points.

Key Features:

Lightweight . Dual adjustment at shoulder and hip . Double attachment points . High tenacity webbing

Weight: 2.04 lbs (925 g)

SG51201 \$130.00

CERTIFIED

ANSI Z359.1, 2007

heightec-PMI™ CIRRUS TWIN HARNESS

The Cirrus harness has a low profile, highly breathable jacket which protects the webbing on the user's back from abrasion during ladder climbing. The leg straps are fitted with quick release buckles for convenience and ease of use. The removable belt provides versatility for any job.

Key Features:

Lightweight . Removable belt for work positioning . Extra attachment point allows greater flexibility and forms a dedicated rescue point

Weight: 2.38 lbs (1.08 kg)

SG51202 \$355.00



CERTIFIED

ANSI Z359.1, 2007

heightec-PMI™ EUROPA

Multi adjustable harness with high degree of lumbar support for telecoms rigging and overhead line work. Quick release buckles on leg loops provide easy adjustment.

Key Features:

Front and rear fall arrest attachment . Side D's for work positioning . Quick release buckles . Adjusts quickly

Weight: 3.75 lbs (1.7 kg)

SG51199 \$290.00

PMI ADVANTAGE

For classic styling, maximum comfort and minimum impact, PMI Advantage offers industrial Kevlar head protection and plenty of detail oriented comfort. Fully adjustable ratchet headband and straps make this a helmet for almost any size head.

Key Features:

Fully adjustable . Three point chinstrap . Headlamp retainer . Goggle mount

Size: 54-64 cm

Weight: 1.25 lbs (567 g)

Blue	Red	Orange	White	Fluorescent Green
HL33013	HL33012	HL33011	HL33014	HL33018
		\$130.00		\$143.00



CERTIFIED

**NFPA 1951
ANSI Z89.1 (07)
TYPE 1**



PMI VENTILATOR

This light duty rescue helmet has all of the features of the Advantage, but has an added vent for those jobs when you need the protection of the Kevlar shell along with a breeze.

Key Features:

Kevlar shell . Three point chinstrap . Headlamp retainer . Earmuff clip . Reflectors . Fully adjustable

Weight: 1.15 lbs (522 g)

White	Red
HL33060	HL33068
	\$145.00

CERTIFIED

**ANSI Z89.1 (07)
TYPE 1**

PMI POD

Excellent for vertical work and confined space operations, the POD is versatile, lightweight, and features a built in light pod that accepts the intrinsically safe Pelican MityLite 2420 (sold separately).

Key Features:

Three point chinstrap . Flash light POD . Goggle mount

Weight: 1.15 lbs (522 g)

Red	White
HL33025	HL33026
	\$123.00

PELICAN MITYLITE

Weight: 8.1 oz (232 g)

HL33015 \$25.95



CERTIFIED

**ANSI Z89.1 (07)
TYPE 1**



HELMET FIT

A comfortable, well-fitting helmet that is designed specifically for vertical work is essential. Helmets must have a secure chin strap and a three-point suspension to keep the helmet on the head when it is needed most. A three point suspension refers to a helmet with webbing support points on both sides of the helmet and at the rear. The chin strap should also be designed so that a relatively high force is required to cause a release. This helps keep the helmet on the user's head in a tumbling fall. The inside suspension of the helmet should hold the shell away from the skull during a blow to the helmet and should provide air circulation and comfort, particularly during hot weather. The shell should have the rigidity to resist impact to the helmet and penetration by sharp objects but be flexible enough to absorb some of the blow that otherwise would be directly transmitted to the skull and spine.

FINGERLESS GLOVES

PMI's famous Rappel Glove, re-engineered. Fingerless design constructed of pliable goatskin and an extra layer of durable cowhide across the palm. A cleverly designed leather pull tab between the fingers makes removal easy.

Key Features:

Lightweight . Soft leathers provide easy movement . Fingers covered just enough for protection . Quick removal

XXSmall XSmall Small Medium Large XLarge
GL22400 GL22401 GL22402 GL22403 GL22404 GL22405 \$32.00



ROPE TECH GLOVES

The same lightweight Rope Tech glove with a face lift! Hand protection and finger dexterity at its best. Ultra lightweight design not suitable hand protection for fast rope or other body rappel techniques. Also available in all black.

Key Features:

Synthetic leather (palm base layer) . Cowhide layer (finger wear points and palm) . ergonomically shaped for maximum protection and durability . Two-Way stretch spandex on top and fingers for greater mobility and breathability . Elastic cuff with pull-tab and Velcro closure . Carabiner loop stores inside for snag free operations

XXSmall XSmall Small Medium Large XLarge XXLARGE
GL22300 GL22301 GL22302 GL22303 GL22304 GL22305 GL22306 \$31.00



LIGHTWEIGHT RAPPEL GLOVES

The original PMI rope work and rappel glove, still the most popular glove on the market. Lightweight, pliable goatskin provides excellent finger dexterity while two extra layers of cowhide across the palm maximize protection where you need it most.

Key Features:

Soft leathers provide easy movement . No exposed seams on the palm

XSmall Small Medium Large XLarge
GL22001 GL22002 GL22003 GL22004 GL22005 \$32.75



ROPE

Rope is the foundation of any vertical system. That is why the PMI product design team puts so much effort into engineering maximum function, durability, and quality into our ropes.

PMI ropes are built and independently certified to applicable national and internationally recognized standards, and as added confidence our own quality assurance program is registered to ISO 9001 Quality Registration. Our in house laboratory is built to the same specifications as independent laboratories, and works twice as hard.



PMI ROPE DESIGN AND INNOVATION

Creating the High Angle Technician's favorite rope is part science, part art. PMI's 30-year reputation for creating the toughest, most abrasion resistant, and most reliable life safety rope available comes from a refined blending of technology and passion. PMI helps drive research and testing in products, systems, and applications to make our products better so that your world can be safer. On the next few pages, you will find information that we hope helps you come to know the PMI line you use and trust.

PMI has an entire team of dedicated professionals standing by, ready to help you with your gear needs. If you have questions regarding PMI rope, and products, please call 1-800-282-7673 or e-mail us at custserv@pmirope.com.



One of PMI's innovations, the PMI Access Pro Rope.

WHAT'S IN A BRAID?

PMI Classic ropes are characterized, at least in part, by their "16-carrier" sheath design. The term "16-carrier" refers to the number of yarn bundles used to create the braid that makes up the sheath of the rope.

While PMI also offers 32 and 48-carrier braid designs, one advantage of PMI's classic 16 carrier sheath design is the dramatic increase it lends to the life and durability of the rope. For any given diameter rope, sheath yarns have to be thinner for more carriers and thicker for fewer carriers. Using 16 braid bundles for the sheath of PMI Classic allows us to use a thicker, more durable sheath yarn, resulting in a tougher, more durable rope. Sheath braid design is a fine balance between yarn denier, tension, number of carriers, and the amount of yarn used.

16 CARRIERS

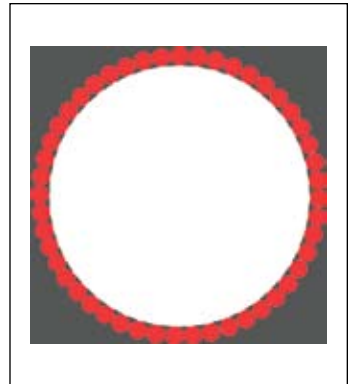
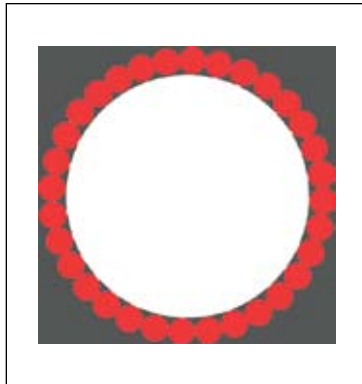
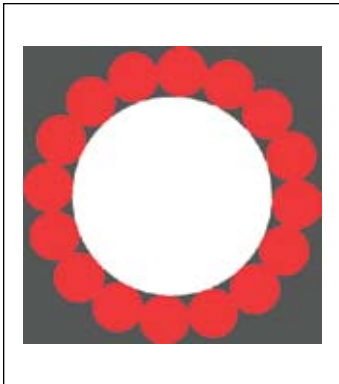
A 16 Carrier sheath provides the most longevity for your rope. Essentially, there are larger bundles, so there is more yarn to wear through before reaching the core. All of PMI Classic Static ropes have a 16 carrier sheath design.

32 CARRIERS

It is common for low stretch ropes to be built with a 32 carrier sheath. This provides a more flexible hand for Rope Access applications.

44 CARRIERS

Many of the dynamic ropes on the market are made with a 48 carrier sheath. This gives the rope a soft hand and makes it very suitable for climbing rope.



LIFE SAFETY ROPE

No single type of rope is ideal for every type of operation. Before purchasing, consider your intended use carefully and choose the PMI rope(s) most appropriate for the job you plan to do. Ropes for rappelling or lowering a single person will have different characteristics than ropes for lead climbing. Rescue ropes for heavy loads will differ from ropes used for water rescue. Other considerations include environmental effects, abrasion, ease of handling, and potential for chemical contamination.



STATIC KERNMANTLE

Traditional American style rigging and rescue rope. With less than 6% elongation at 10% of its minimum breaking strength, it is an excellent choice for lowering and raising because it is very durable and will not 'creep' under load like low stretch ropes will.



LOW STRETCH KERNMANTLE

According to Cordage Institute standards, measured elongation of Low Stretch rope must be between 6-10% at 10% of its rated minimum breaking strength (MBS). Low Stretch rope is common in Rope Access. It often has a nice hand or knotability, and may be preferable for belaying heavy loads.



ROPE PROPERTIES

Static or Low Stretch ropes intended for life safety applications are always clearly noted as being for that purpose, and should be labeled in accordance with appropriate life safety equipment standards. In the U.S., test methods for static and low stretch ropes are set by the Cordage Institute. Look for ropes tested to Cordage Institute standard number CI 1801.

Commodity ropes, such as clothesline, tie downs, or hardware store rope should not be used for life safety.

WARNING

High angle rope techniques are inherently dangerous. Please take the time to read and understand this catalog and all instructions that come with the equipment you purchase. The information in this catalog is provided for making purchasing decisions only and is NOT a substitute for competent instruction and training in safety techniques. It is the responsibility of the user of this equipment to obtain competent instruction and to take adequate precautions for safety when using this equipment. The equipment described in this catalog is designed and tested for use in rope access, rescue, confined space, climbing, mountaineering and caving. Use in any other application is at the discretion of the user.

PMI CLASSIC PROFESSIONAL ROPE

PMI's classic EZ-Bend 16 carrier construction combined with the toughest nylon on the market makes PMI ropes some of the toughest in the world. PMI ropes will always beat 32, 40, and 48 carrier designs made with lesser quality nylons hands down in abrasion and real-world durability tests. Although all diameters of PMI Classic rope are 16 carrier sheath design, the denier (thickness) of each diameter's sheath is different. It is carefully designed to provide the maximum abrasion resistance, "grab" the core to minimize sheath slippage, and provide the desired hand for the intended applications.

Key Features:

NFPA Certified . 16 carrier construction . CI 1801 . Third party certified by UL (Underwriters Laboratories) . CE . Torsionally balanced, continuous filament 6,6 nylon . Available in 17 colors . Also available in custom colors & lengths

11 mm (7/16")

The "time tested" burly sheath design of PMI's 11 mm Classic Static makes it a world favorite for professionals who must routinely subject their ropes to high abrasion applications. No other 11 mm rope will outlast a PMI Classic in side by side, real world applications!

Weight: 80 g/m

MBS: 27 kN (6069 lbf)

Elongation: 1.8% at 300 lbf | 3.0% at 600 lbf | 5.2% at 1000 lbf



	White/Black						
30 m (100 ft)	RR110WB030E	\$87.40					
46 m (150 ft)	RR110WB046E	\$131.20					
61 m (200 ft)	RR110WB061E	\$174.90					
92 m (300 ft)	RR110WB092E	\$262.40					
183 m (600 ft)	RR110WB183E	\$524.90					
200 m (656 ft)	RR110WB200E	\$574.00					
	Yellow/Black	Orange/Black	Red/Black	Blue/Black	Black		
30 m (100 ft)	RR110YB030E	RR110OB030E	RR110RB030E	RR110BB030E	RR110BK030E	\$111.40	
46 m (150 ft)	RR110YB046E	RR110OB046E	RR110RB046E	RR110BB046E	RR110BK046E	\$167.10	
61 m (200 ft)	RR110YB061E	RR110OB061E	RR110RB061E	RR110BB061E	RR110BK061E	\$222.80	
92 m (300 ft)	RR110YB092E	RR110OB092E	RR110RB092E	RR110BB092E	RR110BK092E	\$334.40	
183 m (600 ft)	RR110YB183E	RR110OB183E	RR110RB183E	RR110BB183E	RR110BK183E	\$668.90	
200 m (656 ft)	RR110YB200E	RR110OB200E	RR110RB200E	RR110BB200E	RR110BK200E	\$731.40	
	Red	Blue	Gold	OD Green	Jungle Camo		
30 m (100 ft)	RR110RD030E	RR110BL030E	RR110GD030E	RR110OD030E	RR110JC030E	\$111.40	
46 m (150 ft)	RR110RD046E	RR110BL046E	RR110GD046E	RR110OD046E	RR110JC046E	\$167.10	
61 m (200 ft)	RR110RD061E	RR110BL061E	RR110GD061E	RR110OD061E	RR110JC061E	\$222.80	
92 m (300 ft)	RR110RD092E	RR110BL092E	RR110GD092E	RR110OD092E	RR110JC092E	\$334.40	
183 m (600 ft)	RR110RD183E	RR110BL183E	RR110GD183E	RR110OD183E	RR110JC183E	\$668.90	
200 m (656 ft)	RR110RD200E	RR110BL200E	RR110GD200E	RR110OD200E	RR110JC200E	\$731.40	

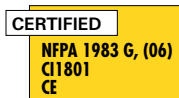
12.5 mm (1/2")

PMI 12.5 mm is the classic 6,6 nylon line for any rugged or harsh environment. High abrasion resistance makes this the toughest rope for any professional.

Weight: 104 g/m

MBS: 42 kN (9441 lbf)

Elongation: 1.0% at 300 lbf | 1.8% at 600 lbf | 3.1% at 1000 lbf



	White/Orange						
30 m (100 ft)	RR125WO030E	\$105.80					
46 m (150 ft)	RR125WO046E	\$158.80					
61 m (200 ft)	RR125WO061E	\$211.70					
92 m (300 ft)	RR125WO092E	\$317.80					
183 m (600 ft)	RR125WO183E	\$635.60					
200 m (656 ft)	RR125WO200E	\$695.00					
	Yellow/White	Orange/White	Red/White	Blue/White	Black		
30 m (100 ft)	RR125YW030E	RR125OW030E	RR125RW030E	RR125BW030E	RR125BK030E	\$124.90	
46 m (150 ft)	RR125YW046E	RR125OW046E	RR125RW046E	RR125BW046E	RR125BK046E	\$187.30	
61 m (200 ft)	RR125YW061E	RR125OW061E	RR125RW061E	RR125BW061E	RR125BK061E	\$249.80	
92 m (300 ft)	RR125YW092E	RR125OW092E	RR125RW092E	RR125BW092E	RR125BK092E	\$374.80	
183 m (600 ft)	RR125YW183E	RR125OW183E	RR125RW183E	RR125BW183E	RR125BK183E	\$749.70	
200 m (656 ft)	RR125YW200E	RR125OW200E	RR125RW200E	RR125BW200E	RR125BK200E	\$819.70	
	Blue	Red	Gold	OD Green	Jungle Camo		
30 m (100 ft)	RR125BL030E	RR125RD030E	RR125GD030E	RR125OD030E	RR125JC030E	\$124.90	
46 m (150 ft)	RR125BL046E	RR125RD046E	RR125GD046E	RR125OD046E	RR125JC046E	\$187.30	
61 m (200 ft)	RR125BL061E	RR125RD061E	RR125GD061E	RR125OD061E	RR125JC061E	\$249.80	
92 m (300 ft)	RR125BL092E	RR125RD092E	RR125GD092E	RR125OD092E	RR125JC092E	\$374.80	
183 m (600 ft)	RR125BL183E	RR125RD183E	RR125GD183E	RR125OD183E	RR125JC183E	\$749.70	
200 m (656 ft)	RR125BL200E	RR125RD200E	RR125GD200E	RR125OD200E	RR125JC200E	\$819.70	

PMI ACCESS PRO ROPE

A PMI rope revolution; the Access Pro is engineered for performance and flexibility. With a polyester sheath and nylon core, this rope is a perfect choice for Rope Access and Fall Protection.

Key Features:

32 carrier construction . Polyester sheath . Nylon core . A superior hand for Fall Arrest and Rope Access applications

11 mm (7/16")

MBS: 33 kN (7418 lbf)

	Red/Black	
30 m (100 ft)	IR11ORB030P	\$104.70
46 m (150 ft)	IR11ORB046P	\$157.00
61 m (200 ft)	IR11ORB061P	\$209.40
92 m (300 ft)	IR11ORB092P	\$314.20
183 m (600 ft)	IR11ORB183P	\$628.50



ACCESSORY CORD

PMI Accessory cord is made with the ideal combination of force absorption, flexibility, and durability. Lightweight and supple line makes creating anchors and tying knots a breeze. PMI Accessory Cord comes in many colors. Our Multi-Color options will vary per order.

Key Features:

100% Nylon . Available from 2 mm up to 9 mm . Discounted price for spooled lengths

Diameter	Color	Per Meter	100 m Spool
2 mm	Multi Color	\$0.34	\$32.10
	Black		
3 mm	Multi Color A		
	Multi Color B		
4 mm	Multi Color A		
	Multi Color B		
5 mm	Multi Color A		
	Multi Color B		
6 mm	Multi Color A		
	Multi Color B		
7 mm	Multi Color A		
	Multi Color B		
8 mm	Multi Color A		
	Multi Color B		
9 mm	Multi Color A		
	Multi Color B		



Diameter MBS

2 mm	0.7 kN (150 lbf)
3 mm	1.8 kN (400 lbf)
4 mm	3.8 kN (850 lbf)
5 mm	5.8 kN (1300 lbf)
6 mm	7.5 kN (1685 lbf)
7 mm	10.7 kN (2400 lbf)
8 mm	13.4 kN (3010 lbf)
9 mm	16.2 kN (3650 lbf)



For a look at PMI's entire product line, visit www.pmirope.com



Pigeon Mountain Industries:

PO Box 803

LaFayette, GA 30728 USA

Phone: 1-706-764-1437

Toll Free: 1-888-764-1437

Email: custserv@pmirope.com

Web: www.pmirope.com